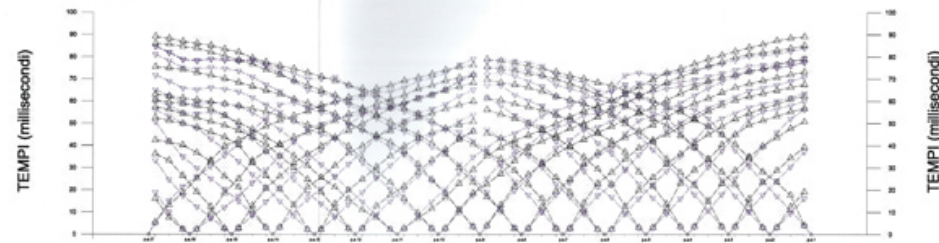
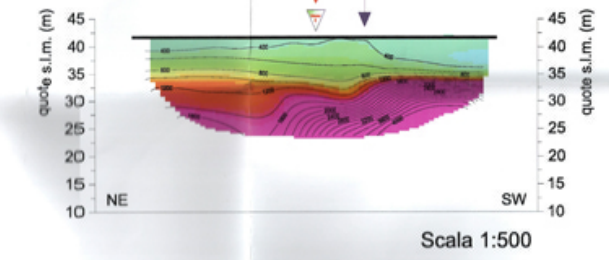
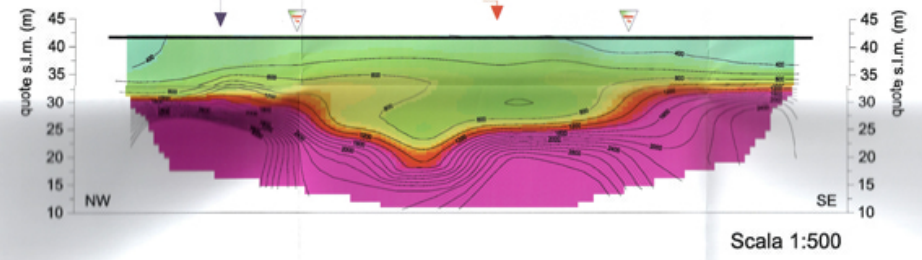
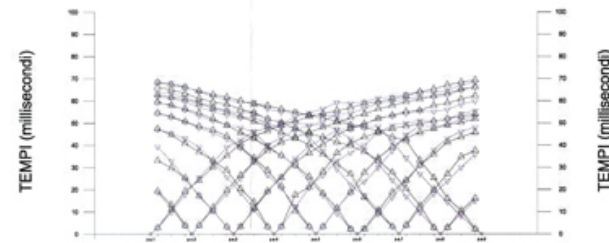


INTERPRETAZIONE TOMOGRAFICA

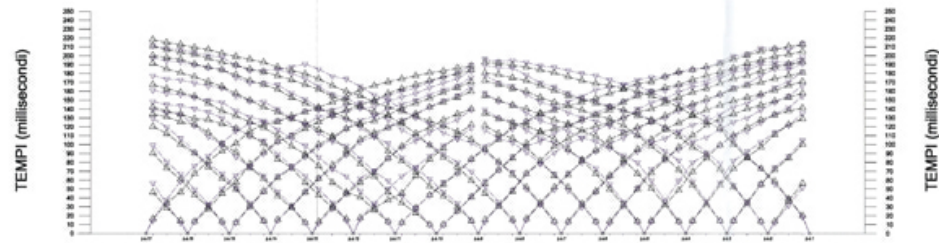
PROFILO 1 onde P



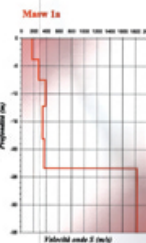
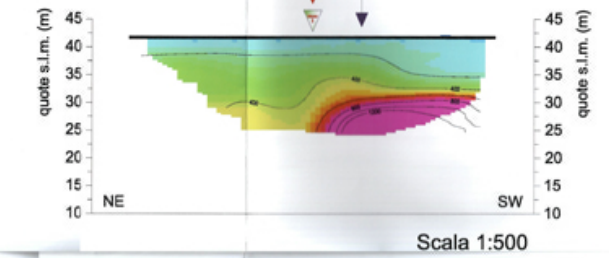
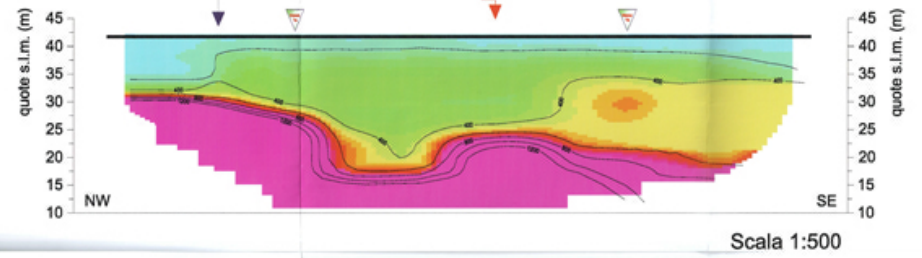
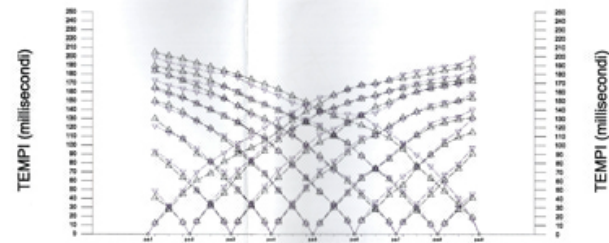
PROFILO 2 onde P



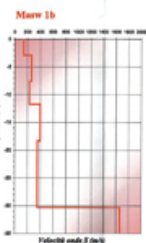
PROFILO 1 onde Sh



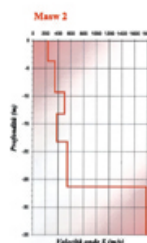
PROFILO 2 onde Sh



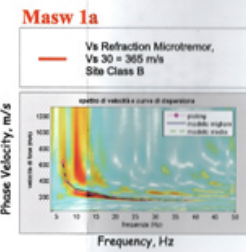
Masw 1a



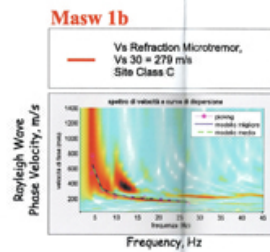
Masw 1b



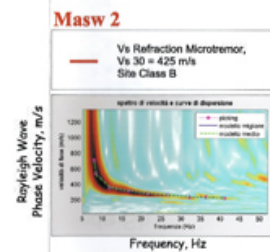
Masw 2



Masw 1a

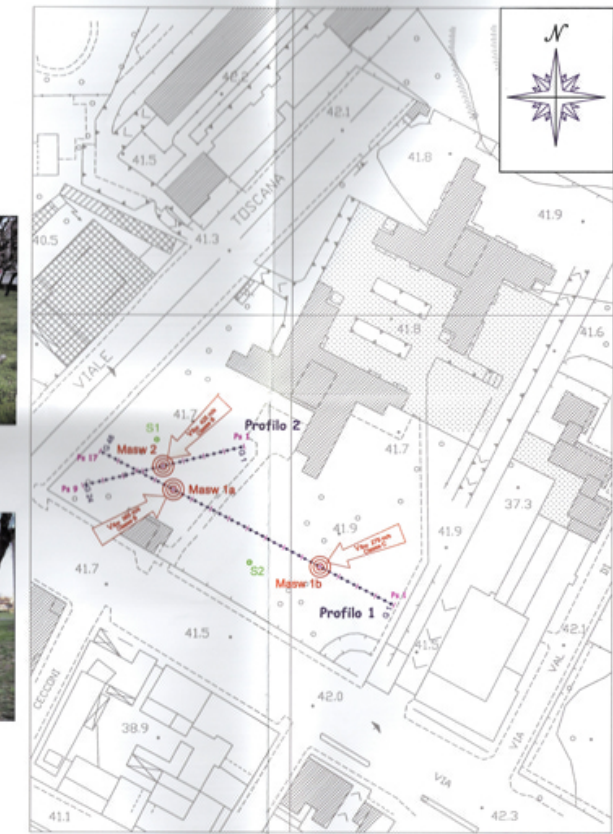


Masw 1b



Masw 2

PLANIMETRIA UBICATIVA DELLE INDAGINI GEOFISICHE



Scala 1:1000



**Legenda**

- Sondaggio a carotaggio continuo
- Profilo sismico a rifrazione onde P con posizione dei geofoni e dei punti di scoppio
- Masw Multichannel analysis of surface waves

**LEGENDA**

- Dromedrone: dati sperimentali / valori calcolati con l'interpretazione tomografica
- Punto di scoppio
- Superficie topografica
- Curve di isovelocità sismica e relativo valore (m/s) (onde P, equidistanza 250 m/s)
- Maglia cella tomografica 0,9 X 0,4 m

**SCALA COLORIMETRICA**  
(velocità sismica onde P m/s)  
0 500 1000 1500

**SCALA COLORIMETRICA**  
(velocità sismica onde Sh m/s)  
0 200 400 600

COMMITTENTE: 1				GEOLOGIA PALAZZI - GOMARELLI			
LOCALITÀ: Palazzo della Regione Toscana - Via di Novati - Firenze				INDAGINE: Indagine geofisica al fine della risposta sismica locale			
OGGETTO: Prospezione Sismica				TAVOLA: Planimetria ubicativa, profili sismici a rifrazione onde P onde Sh e Prove Masw			
3612SGG01A		21/04/09		1:500		1:1.000	
STUDIO DI GEOLOGIA E GEOFISICA s.r.l.				DATA: 21/04/09		CONTROLLO: GEA/07	